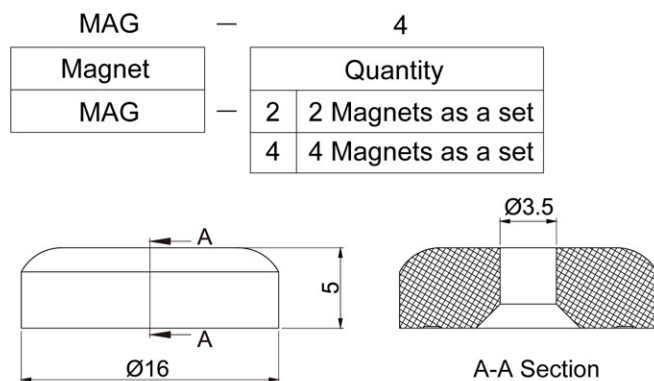


Magnet Outline Diagram

Optional



Size of the magnet : $\varnothing 16$ (Maximum tightening torque : 6Kg)



BM Series
Magnet assembly diagram

Ocelot For Plot

Optional



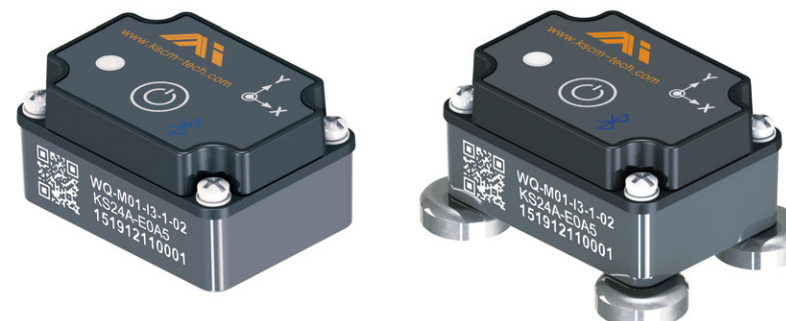
The software will efficiently detect the abnormal vibration event for the machine



康信創意科技有限公司
Creative Maintenance Technology Co., Ltd.

BL-M1 BM-M1 Series

Bluetooth (BLE) Intelligent Vibration & Temperature Sensor



Summary

BL / BM Series is a three-axis digital intelligent vibration sensor equipped with a Bluetooth Low Energy and high-efficiency computing microcontroller .
Bluetooth 5.0 technology is adopted for sensor communication , so that the real-time vibration data can be easily obtained and displayed on the remote devices , such as smart phone or tablet devices .
By monitoring the real-time vibration state of the equipment allowing user take early action before the equipment is damaged or further downtime losses .

Features

- Bluetooth Low Energy 5.0
- Reduce the wiring cost
- Real-time vibration monitoring
- Equipped with high-capacity battery allow long-term operation
- High accuracy, stability and low energy consumption
- 3 Output formats: Features, FFT and ISO10816
- Assort with OCELOT series software for vibration monitoring and analysis
- Equipped with LED status light
- Weather and corrosion-resistant SUS stainless steel is adopted as material for the BL series housing
- Aluminium is adopted as material for BM series housing
- Easy install and compact
- Industrial IP66-rated

Applications

- Manufacturing machine :
Machine tool , Machine arm
- Rotating machine :
Wind turbine , Motor , Pump
- Transport and transmission machine :
Escalator , Elevator , Production line
- Public Facilities :
Building structural , Bridge , Dam
- Places that power supply or signal pipeline are unavailable



13F., No. 953, Zhongzheng Rd., Zhonghe
Dist., New Taipei City 23544, Taiwan
TEL : +886-2-2659-8339
FAX : +886-2-2659-8389



www.kscm-tech.com Facebook



Ordering Information

BL	M12		I3		6		08	
Series	Series Number & Communication Protocol		Model & Axis		Bandwidth		Measuring Range	
BL	M11	BLE	I3	3 Axes	1	1.6kHz	02	±2g
BM							04	±4g
							08	±8g
							16	±16g

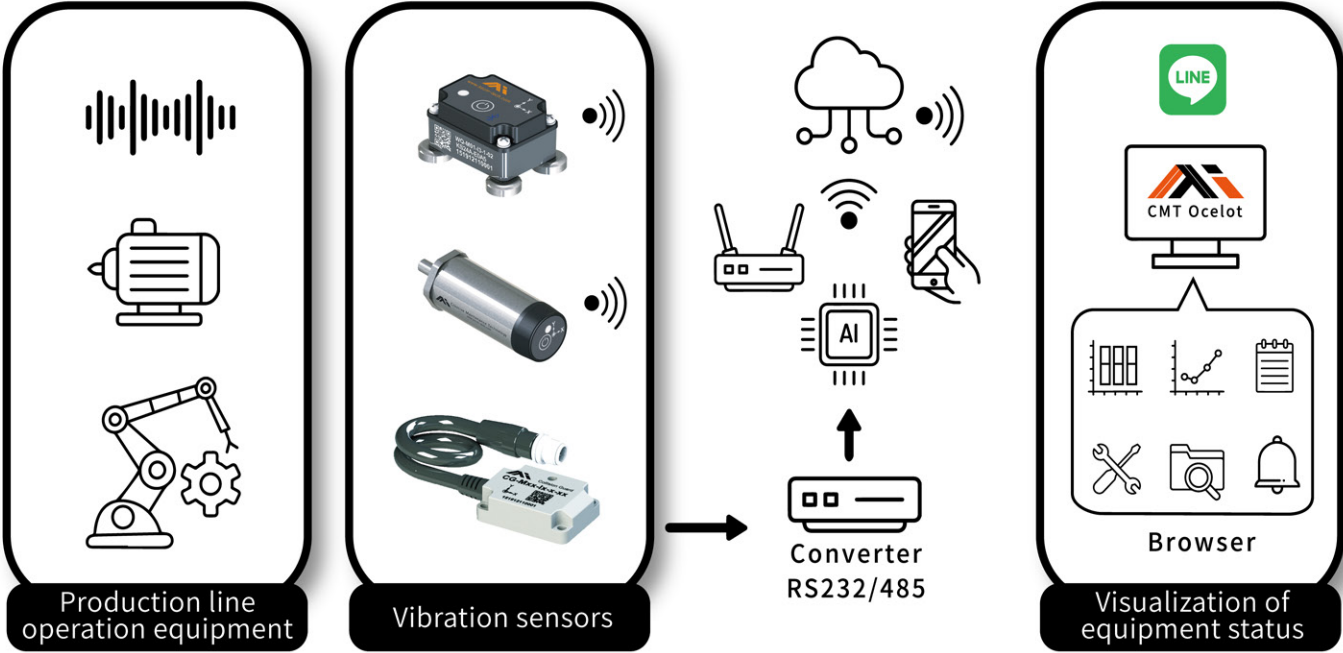
M12	BLE	I3	3 Axes	6	6kHz	02	±2g
						04	±4g
						08	±8g
						16	±16g

Specification

BL-M
BM-M
Vibration
Sensor

	BL Series (Removable Battery)	BM Series (Rechargeable Battery)
Measurement Range	M11~12 : ±2g / ±4g / ±8g / ±16g	
Sensitivity	M11 : 0.244@±2g , 0.488@±4g , 0.976@±8g , 1.952@±16g (mg/LSB) M12 : 0.061@±2g , 0.122@±4g , 0.244@±8g , 0.488@±16g (mg/LSB)	
Bandwidth	M11 : 12.5Hz to 1.6kHz M12 : 33Hz to 6kHz , Simulation to 10kHz	
Measurement Temperature	-10 ~ +85 °C	
Battery Specification	DC3.6V 2600mAh x2 14500 Removable Li-ion battery	DC 3.6V 400mAh Rechargeable Li-ion battery (300-cycle life)
Communication Protocol & Baud Rate	Bluetooth Low Energy , Distance around 10 ~ 50M	
Data Format	1. Feature (Temperature and 12 types of Features on x, y, z axes) 2. FFT 3. ISO 10816	
Data Feature	Mean , Standard Deviation , RMS , Crest Factor , Skewness , Kurtosis , Peak to Peak , Form Factor , Min , Max , Moving average RMS , Moving average STD and Contact Temperature	
Installation Method	M8 Screw Fixing	M4 Screw Fixing / Super Strong Magnets
Maximum Impact	10,000g	
Dimension W x D x H	52 x 48 x 105 mm	50 x 36 x 25 mm without Magnets
Shell Material	Shell : SUS Stainless Steel Cover: Plastic	Shell : Aluminium Cover: Plastic
Weight	250g ±5% (Without Battery)	95g ±5%
Working Temperature	-10 ~ +85 °C (Recommend working temperature is -10 ~ +55 °C in terms of ensuring battery life)	
Storage Temperature	-10 ~ +85 °C	
Working Humidity	0 ~ 95%	
Water & Dust Resistance	IP66	

System Bolck Diagram



Outline Dimension

